

Property Brochure for

204 S Jefferson Street

East Lynne, MO 64743



Kevin Thellman

REALTOR®

RE/MAX Elite, REALTORS

p: 816-446-8211

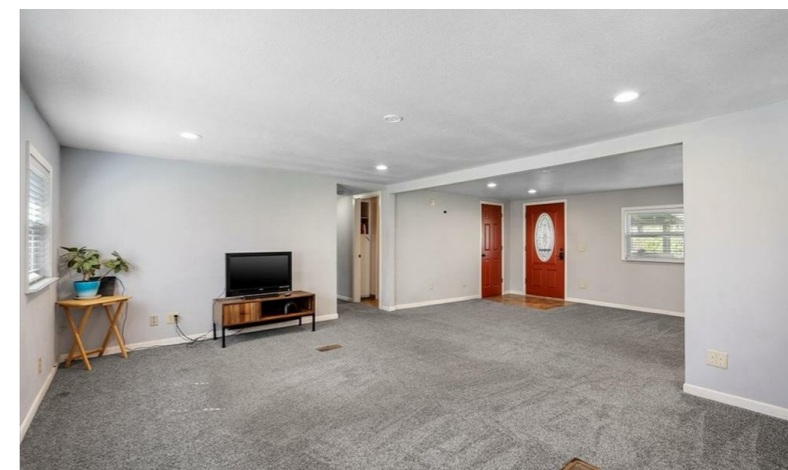
e: kevinmtrealestate@gmail.com

w: <https://kthellman.rmxinfinity.com/>

1201 NE Windsor Dr, Lee's Summit, MO 64086

Generated in





204 S Jefferson Street, East Lynne, MO 64743








PROPERTY HIGHLIGHTS



About Property

OPEN TO ALL LENDING OPTIONS. All documents are in hand! ~Motivated Seller on this great home. This property is located right across the street from East Lynne's K-8th school. It is a nicely set up ranch home with the primary bed, bathroom on the kitchen side and the 2 bedrooms and two full bathrooms on the opposite side. It is on a 0.42-acre double city lot w/ 2 water meters. New furnace/AC, gutters w/ leaf guards, flooring & paint throughout the whole home. Large open eat-in kitchen/dining/living room area is a must-feel. Every room is massive & designed w/ ample cam lighting. Fenced front yard, concrete RV pad & the metal roof on the house & garage is super low maintenance. The garage shop outbuilding measures 22' by 56', has half concrete & half gravel floor & 5 garage door bays.

Summary

-  \$244,000
-  Single Family
-  1675 Sq Ft
-  Built 1989
-  3 Beds
-  3 Total Baths
-  0.42 Acres



Disclaimer: this data is from 3rd party sources. Accuracy cannot be guaranteed.

©2024 Listing Booster.

204 S Jefferson Street, East Lynne, MO 64743

ESSENTIAL PLACES NEARBY



Southland Animal Hospital

Veterinarian - Distance: 5.61 miles



Brickhouse Coffee Bar And Eatery

Coffee Shop - Distance: 6.44 miles



Commerce Bank

Bank - Distance: 7.00 miles



Anytime Fitness

Fitness Center - Distance: 7.38 miles



Cass Regional Medical Center

Medical Clinic - Distance: 7.98 miles



Conoco

Gas Station - Distance: 6.20 miles



Walgreens

Pharmacy - Distance: 6.97 miles



Ball's Price Chopper

Super Market - Distance: 7.11 miles



Walmart Supercenter

Department Store - Distance: 7.53 miles



Harper's Moto Guzzi

Auto Parts Store - Distance: 12.42 miles

By Category within 8 Miles

Veterinarians.....	14
Gas Stations.....	9
Coffee Shops.....	7
Auto Parts Stores.....	6
Super Markets.....	5

Medical Clinics.....	3
Pharmacies.....	3
Banks	2
Department Stores.....	1
Fitness Centers.....	1

204 S Jefferson Street, East Lynne, MO 64743

RESTAURANTS NEARBY



Fugly's Bar & Grill

American - Distance: 0.22 miles



Fatboyz

Bar - Distance: 5.05 miles



Casey's

Pizza - Distance: 5.48 miles



Brickhouse Coffee Bar And Eatery

Breakfast & Brunch - Distance: 6.45 miles



Bona Fide Bakery And Cafe

Cafes - Distance: 6.50 miles



Best Burrito

Mexican - Distance: 6.80 miles



Peniku

Japanese - Distance: 6.92 miles



The Garage Burgers & Brew

Burgers - Distance: 6.96 miles



Dairy Queen Grill & Chill

Fast Food - Distance: 7.00 miles



China Wok

Chinese - Distance: 7.01 miles

By Cuisine within 5 Miles

Burgers.....	5	Mexican.....	2	Chinese.....	1
American.....	4	Breakfast & Brunch.....	1		
Pizza.....	4	Cafes.....	1		
Bars.....	2	Fast Food.....	1		

204 S Jefferson Street, East Lynne, MO 64743

OUTDOOR ACTIVITIES NEARBY



RECREATIONAL WATER

Country Creek Golf Club - Pleasant ...
Distance: 8.04 miles



GOLF

Rock Island Spur State Park
Distance: 8.46 miles



PARK

Kircher Lake
Distance: 0.81 miles



BIKE / PEDESTRIAN TRAIL

Rock Island Spur State Park
Distance: 8.46 miles

By Category
within 8 Miles

Golf Course..... 3
Parks..... 3

Bike / Pedestrian Trails..... 1

204 S Jefferson Street, East Lynne, MO 64743

SCHOOLS NEARBY



Grades: PK - 08

EAST LYNNE ELEMENTARY SCHOOL



0.2 Miles



Student To Teacher Ratio: **10.30**

Grades: PK - 08

EAST LYNNE ELEMENTARY SCHOOL



0.2 Miles



Student To Teacher Ratio: **10.30**

Grades: 09 - 12

HARRISONVILLE HIGH SCHOOL



5.8 Miles



Student To Teacher Ratio: **16.90**

The above schools are the assigned public schools for this property.



LENDER

Ron Cardozo

First Bank Mortgage

NMLS: 34541

p: 913-710-5626

e: ron@roncardozo.com

w: www.roncardozo.com

6201 College Blvd Suite 100, Overland Park, KS 66211





FOR MORE INFORMATION, PHOTOS OR TO SCHEDULE A SHOWING

TEXT HOME43493 TO (844) 573-0700

Msg & Data Rates May Apply.

AGENT

Kevin Thellman

REALTOR®

p: 816-446-8211

e: kevinmtrealestate@gmail.com

w: <https://kthellman.rmxinfinity.com/>

1201 NE Windsor Dr, Lee's Summit, MO 64086

