

Property Brochure for

2021 Benton Boulevard

Kansas City, MO 64127



KANSAS CITY
HOMES



Cobey Cooper

REALTOR®

BHG Kansas City Homes

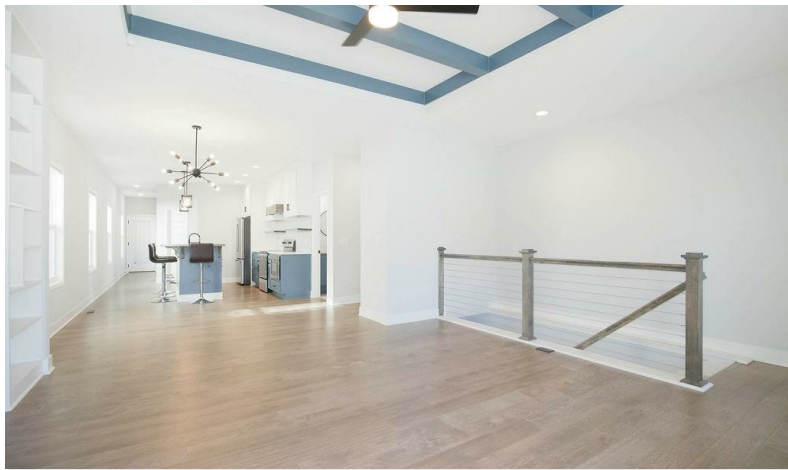
p: 913-713-9484

e: cobeyc@kansascityhomes.com

7400 State Line Ste 200 B, Prairie Village, KS 66208

Generated in





2021 Benton Boulevard, Kansas City, MO 64127

PROPERTY HIGHLIGHTS



About Property

Come enjoy this GOLD award winning floor plan. You will be amazed with the architectural design, urban lifestyle, and a 8 year tax abatement. This floor plan includes hardwood flooring on the main level, quartz counters throughout, main level laundry, a large primary suite w/ picture window, walk-in closet and primary bath with double vanity & walk-in shower. Downstairs offers 2 large bedrooms w/ egress windows and a large rec room/living room with fireplace. Step outside the backdoor and enjoy your private oasis amidst the hustle and bustle of the city, featuring a screened in porch, built with vinyl decking and a 6ft privacy fence. Perfect mix of city life and a quiet friendly suburb. Please come see this GOLD award winning floor plan for the "Pick of the Parade" in the Fall Parade of Homes Tour.

Summary

-  \$450,000
-  Single Family
-  1912 Sq Ft
-  Built 2021
-  3 Beds
-  2.5 Total Baths
-  0.12 Acres



Disclaimer: this data is from 3rd party sources. Accuracy cannot be guaranteed.

©2024 Listing Booster.



2021 Benton Boulevard, Kansas City, MO 64127



ESSENTIAL PLACES NEARBY



Truman Medical Centers

Medical Clinic - Distance: 0.33 miles



Hong Kong Distribution

Super Market - Distance: 0.33 miles



Midwest Radiator

Auto Parts Store - Distance: 0.55 miles



McDonald's

Coffee Shop - Distance: 0.58 miles



Public Safety Credit Union

Bank - Distance: 0.65 miles



Service Oil Company

Gas Station - Distance: 0.71 miles



CVS Pharmacy

Pharmacy - Distance: 1.31 miles



Linwood YMCA/James B. Nutter, Sr. C...

Fitness Center - Distance: 1.45 miles



Halls Downstairs

Department Store - Distance: 1.79 miles



Union Hill Animal Hospital

Veterinarian - Distance: 2.18 miles

By Category within 8 Miles

Veterinarians.....	49
Coffee Shops.....	45
Medical Clinics.....	45
Fitness Centers.....	45
Super Markets.....	43

Auto Parts Stores.....	38
Gas Stations.....	31
Banks	30
Department Stores.....	24
Pharmacies.....	16



2021 Benton Boulevard, Kansas City, MO 64127

RESTAURANTS NEARBY



Arthur Bryant's Barbeque
Barbeque - Distance: 0.47 miles



Taqueria Silvas
Mexican - Distance: 0.62 miles



The ProspectKC @ The Spot
Sandwiches - Distance: 0.77 miles



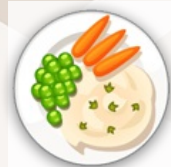
China Feast
Chinese - Distance: 0.80 miles



Soiree Steak & Oyster House
Seafood - Distance: 0.84 miles



Portia's Cafe
Diners - Distance: 0.89 miles



Peachtree Cafe'teria
Soul Food - Distance: 0.91 miles



Humdinger Drive In
Burgers - Distance: 1.08 miles



Vested Beacon Hill Coffee
Breakfast & Brunch - Distance: 1.21 miles



Eleos Coffee
American - Distance: 1.37 miles

**By Cuisine
within 5 Miles**

American.....	64	Barbeque.....	22	Delis.....	9	Soul Food.....	3
Breakfast & Brunch.....	41	Mexican.....	22	Diners.....	7	Food Court.....	2
Seafood.....	27	Burgers.....	16	Chinese.....	3		
Sandwiches.....	26	Pizza.....	10	African.....	3		



2021 Benton Boulevard, Kansas City, MO 64127

OUTDOOR ACTIVITIES NEARBY



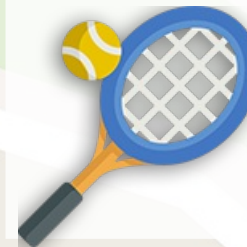
PARK
Hospital Hill Park
Distance: 1.54 miles



RECREATIONAL WATER
Bales Lake
Distance: 1.95 miles



DOG PARK
River Market Dog Park
Distance: 2.21 miles



TENNIS
Plaza Tennis Center
Distance: 3.77 miles



BIKE / PEDESTRIAN TRAIL
Rozarks Nature Trail
Distance: 4.71 miles



GOLF
Royal Meadows Golf Course
Distance: 6.11 miles

By Category
within 8 Miles

Golf Course.....	26
Parks.....	42
Dog Parks.....	11

Bike / Pedestrian Trails.....	15
Tennis Courts.....	18



2021 Benton Boulevard, Kansas City, MO 64127

SCHOOLS NEARBY



Grades: PK - 06

WHEATLEY ELEMENTARY SCHOOL



0.4 Miles



Student To Teacher Ratio: **13.50**

Grades: PK - 06

WHEATLEY ELEMENTARY SCHOOL



0.4 Miles



Student To Teacher Ratio: **13.50**

Grades: 09 - 12

EAST HIGH SCHOOL



1.5 Miles



Student To Teacher Ratio: **16.40**

The above schools are the assigned public schools for this property.



LENDER

Ron Cardozo

First Bank Mortgage

NMLS: 34541

p: 913-710-5626

e: ron@roncardozo.com

w: www.roncardozo.com

6201 College Blvd Suite 100, Overland Park, KS 66211





KANSAS CITY
HOMES

FOR MORE INFORMATION, PHOTOS OR TO SCHEDULE A SHOWING

TEXT HOME43568 TO (844) 573-0700

Msg & Data Rates May Apply.

AGENT

Cobey Cooper

REALTOR®

p: 913-713-9484

e: cobeyc@kansascityhomes.com

7400 State Line Ste 200 B, Prairie Village, KS 66208

